

pantalon escolar

<https://moldessolis.com/>

5 tallas

—

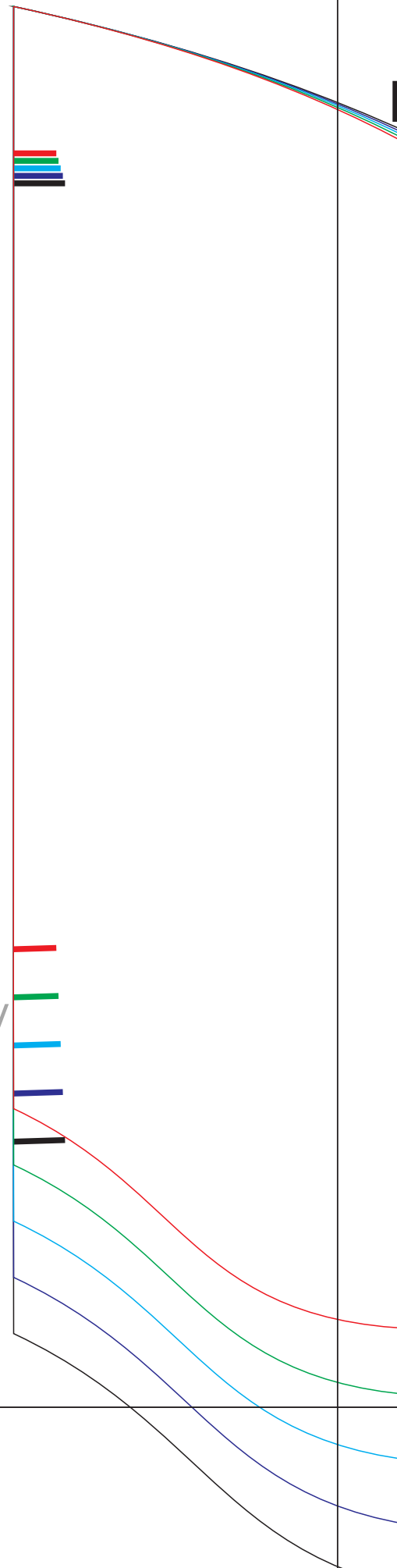
m

N:

pantalon escolar

<https://moldessolis.com/>

5 tallas



MOLDSSILLO

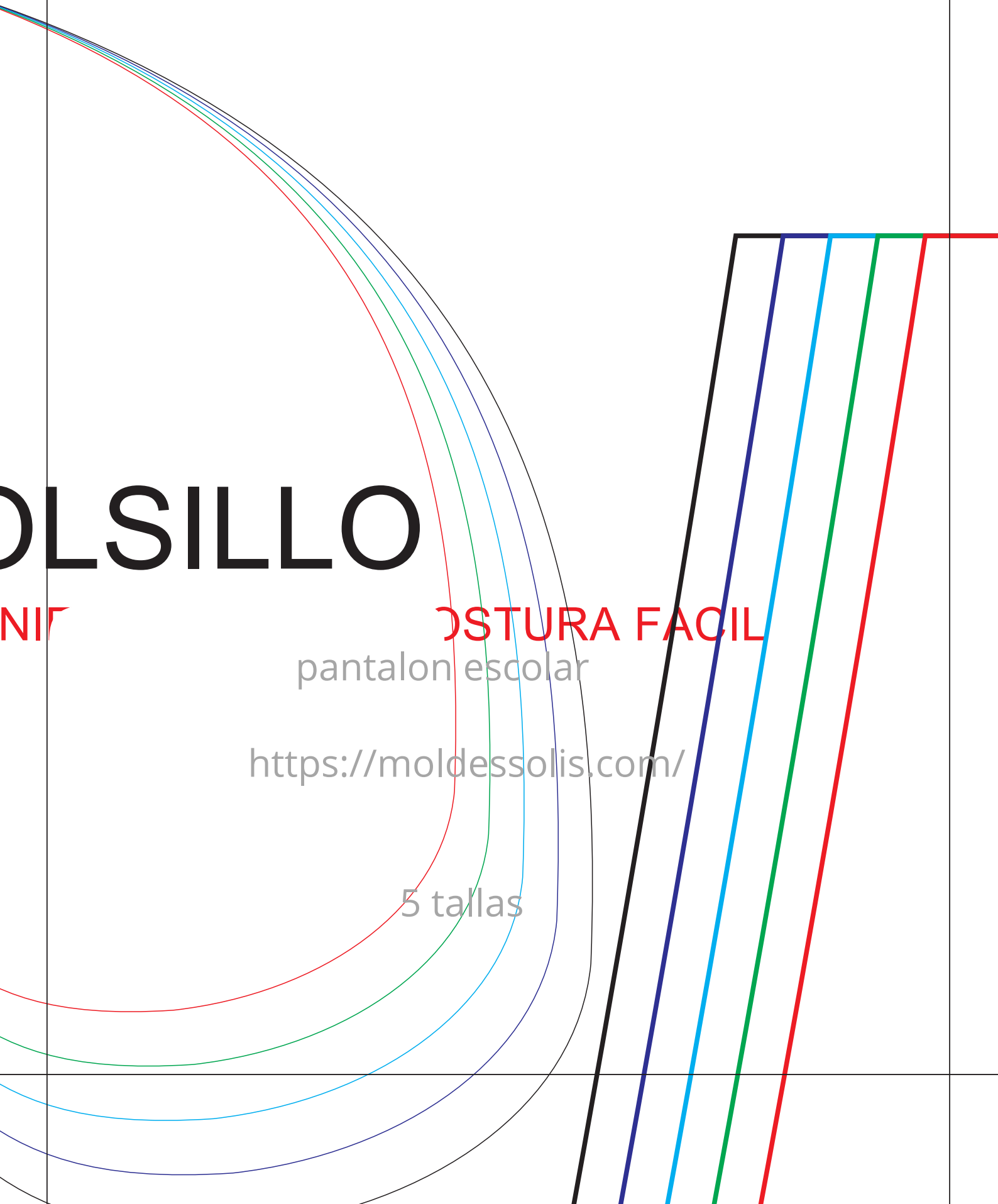
NIF

CONSTRUCCIÓN FACIL

pantalón escolar

<https://moldessolis.com/>

5 tallas



A
ES

pantalon escolar

<https://moldessolis.com/>

5 tallas

pantalón escolar

<https://moldessolis.com/>

5 tallas

**UNA VEZ TERMINADA
LA PRENDA LA CINTURA
DEBERIA MEDIR;**

XL - TERMINA EN 37.0 cm.

L - TERMINA EN 35.5 cm.

M - TERMINA EN 34.0 cm.

S - TERMINA EN 32.5 cm.

XS - TERMINA EN 31.0 cm.



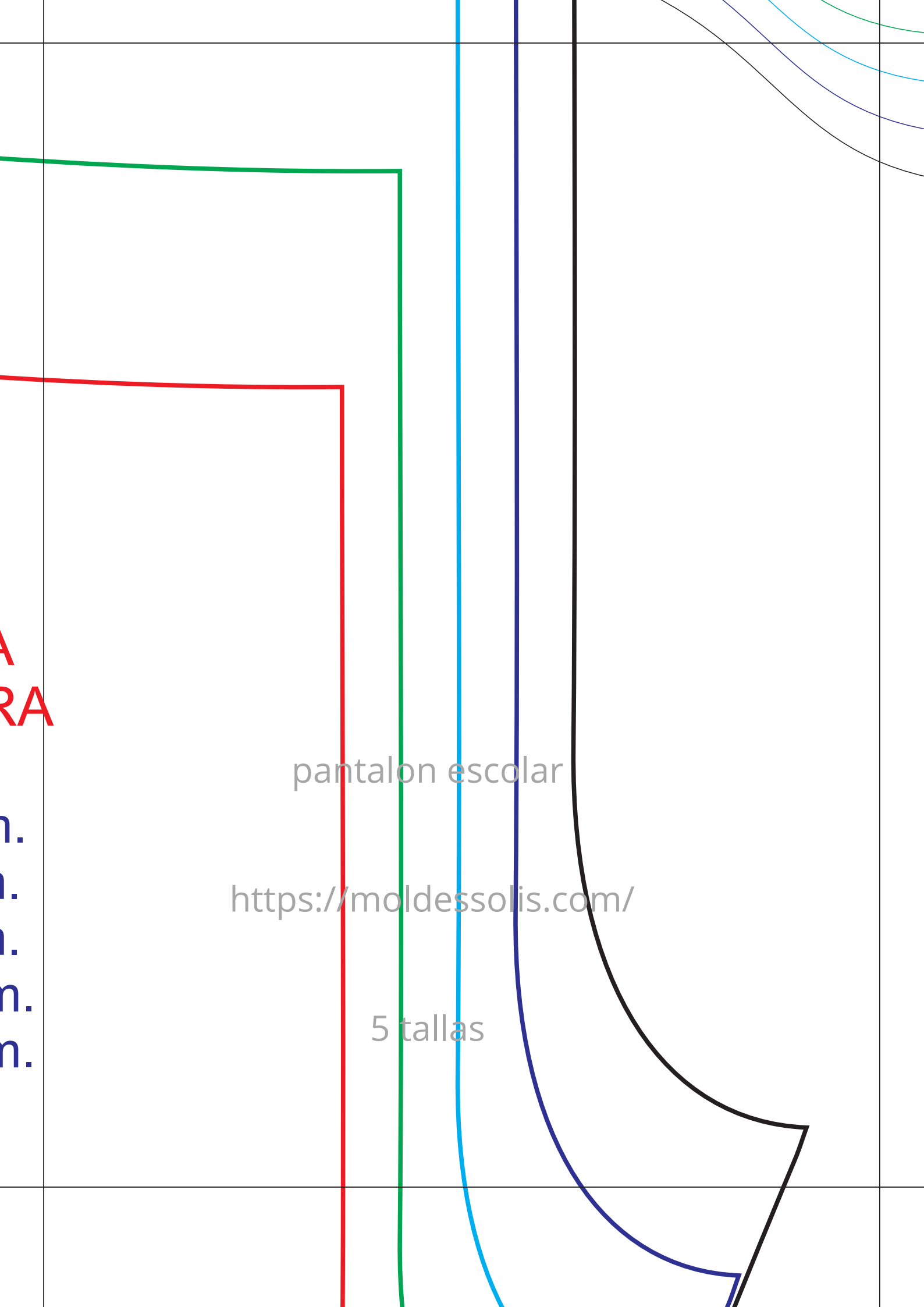
A
RA

n.
n.
n.
n.
n.

pantalon escolar

<https://moldessolis.com/>

5 tallas





pantalon escolar

<https://moldessolis.com/>

5 tallas

pantalon escolar

<https://moldessolis.com/>

5 tallas

ELVANTHERO

pantalon escolar

<https://moldessolis.com/>

5 tallas



pantalon escolar

The image shows a technical drawing of a school pants pattern. It features five distinct size variations, each represented by a different colored line: red, green, blue, dark blue, and black. The pattern is shown in a side view, with the waistband at the top and the leg extending downwards. The lines are curved to represent the shape of the pants, and they are arranged in a way that shows how the pattern would change for different sizes. The background is a light gray grid.

<https://moldessolis.com/>

5 tallas



pantalon escolar

<https://moldessolis.com/>

5 tallas

ALDA

pantalon escolar

<https://moldessolis.com/>

5 tallas

pantalon escolar

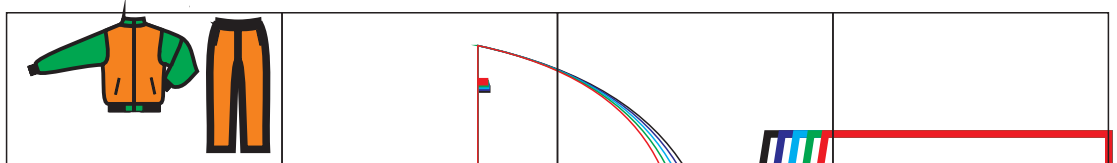
<https://moldessolis.com/>

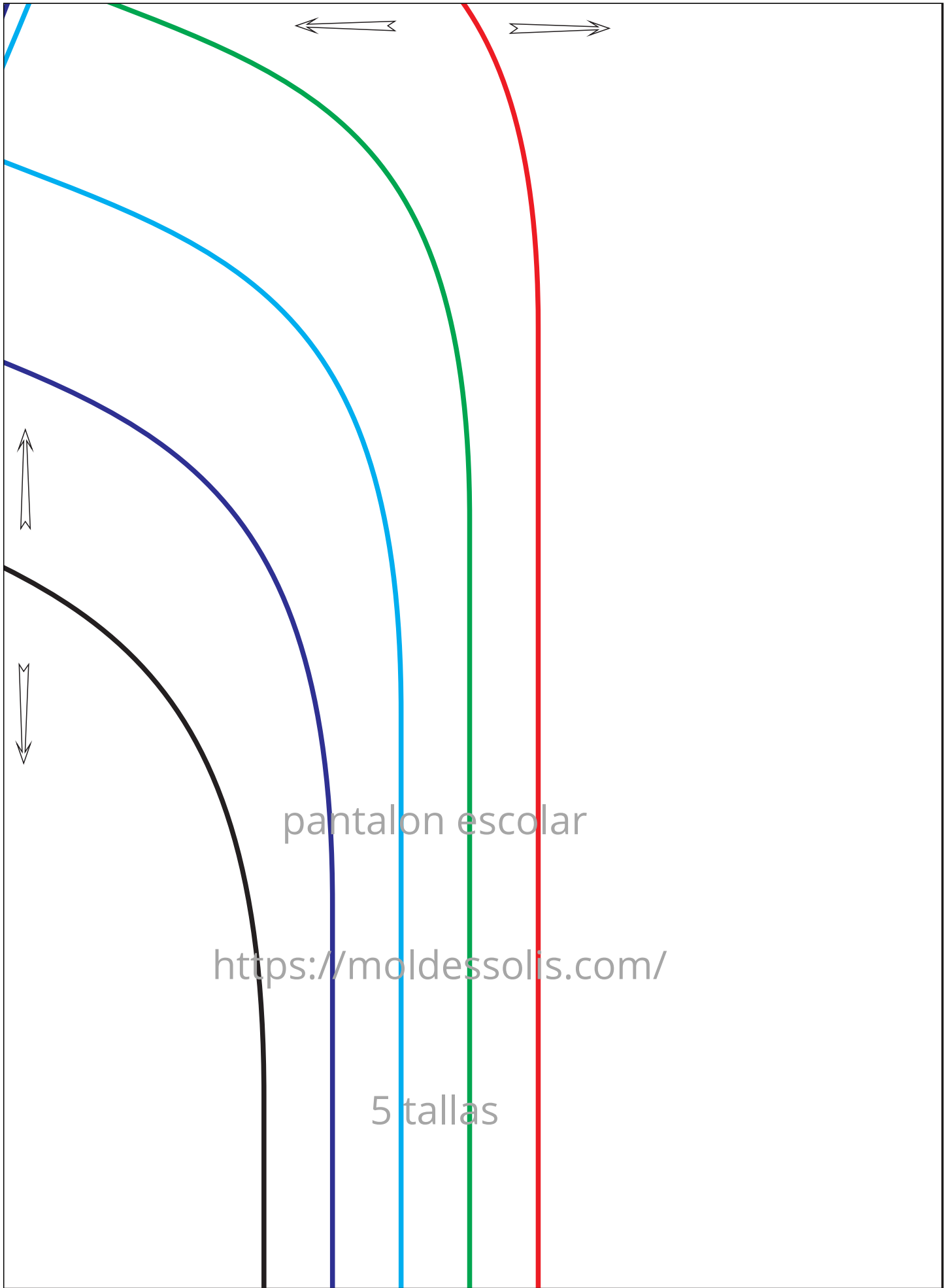
5 tallas

pantalon escolar

<https://moldessolis.com/>

5 tallas





ESPANA

pantalon escolar

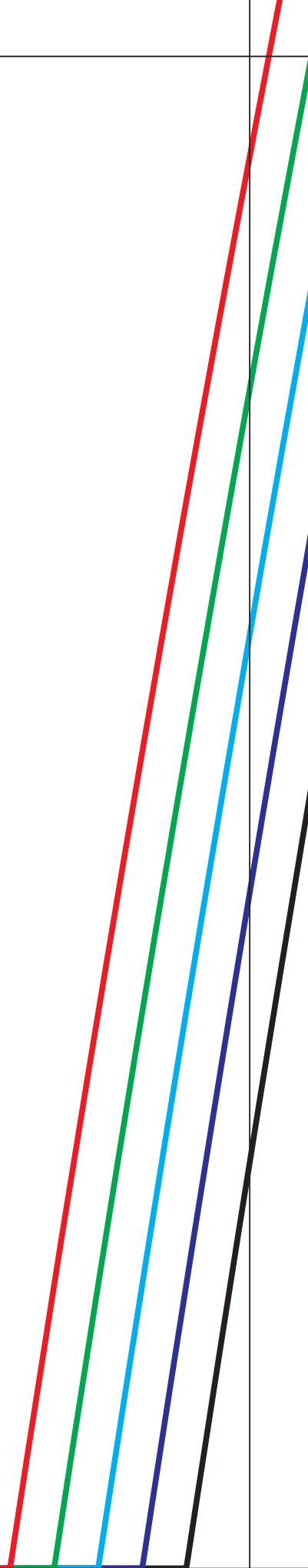
<https://moldessolis.com/>

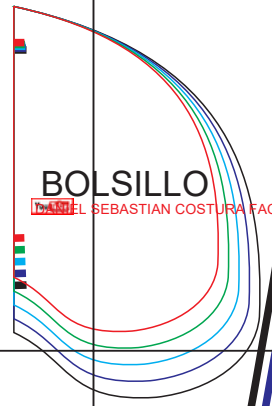
5 tallas

pantalon escolar

<https://moldessolis.com/>

5 tallas





DELANTERO

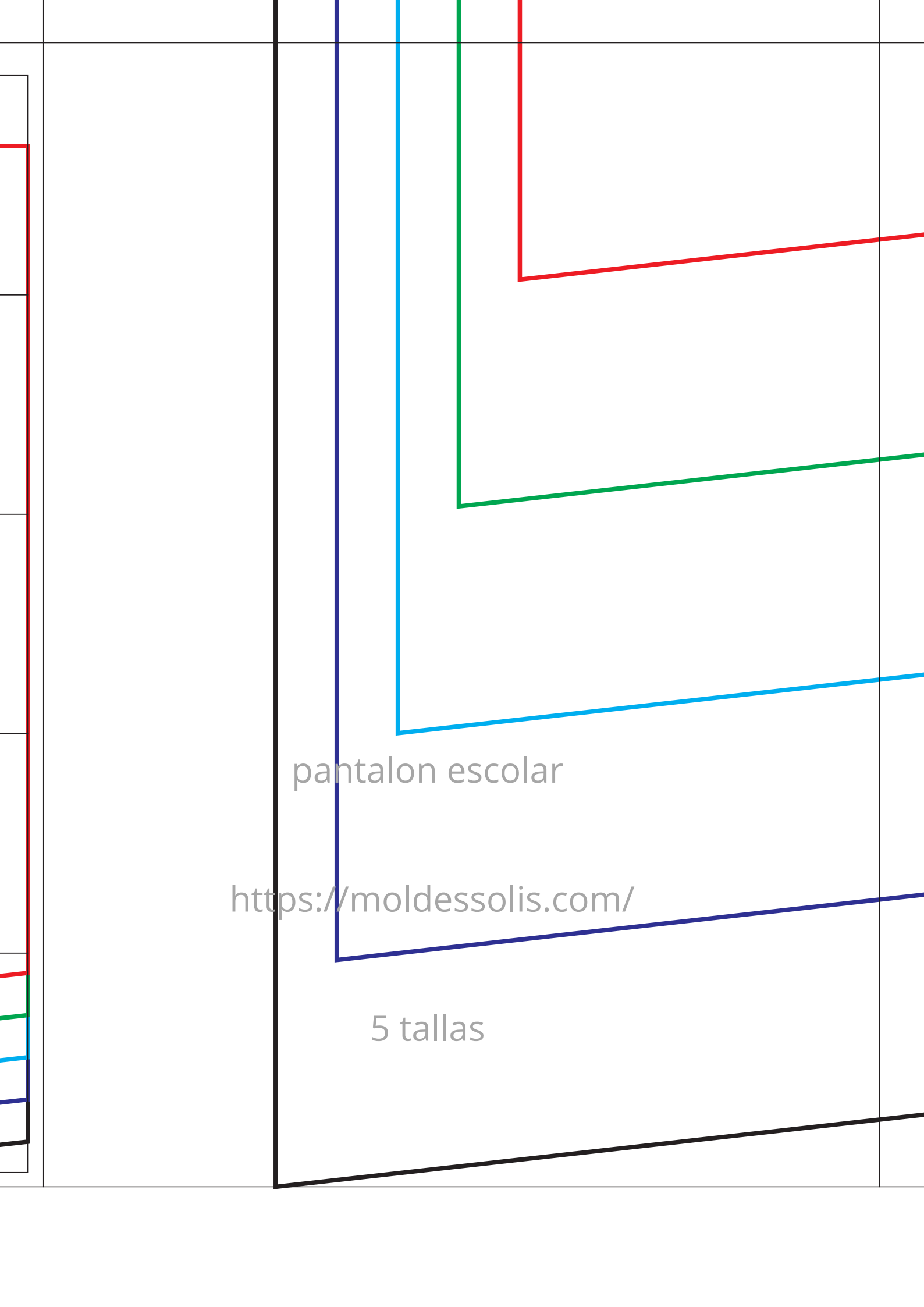
ESPALDA

pantalón escolar

<https://moldessolis.com/>

5 tallas

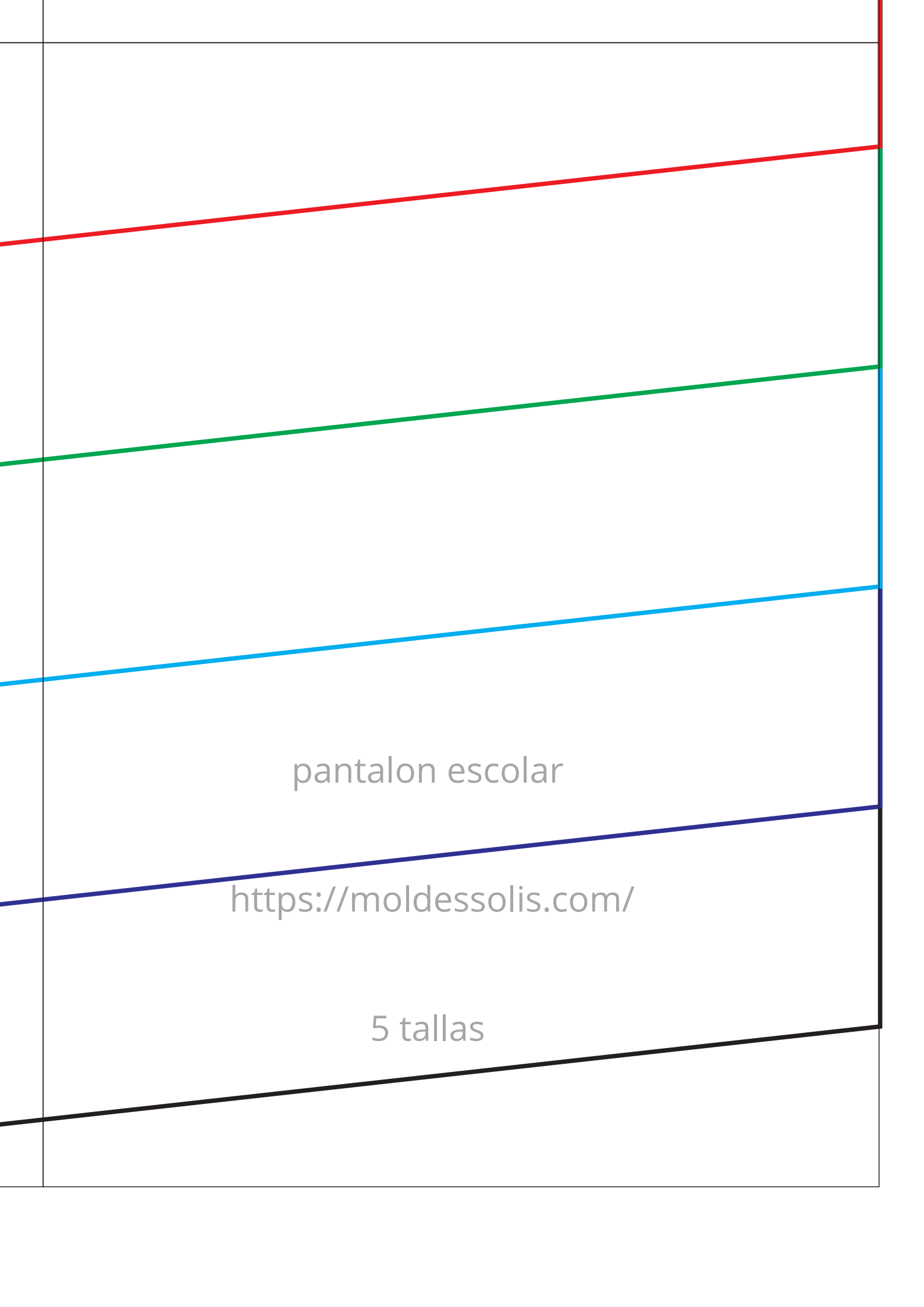




pantalon escolar

<https://moldessolis.com/>

5 tallas



pantalon escolar

<https://moldessolis.com/>

5 tallas